

1. Manufacturer

Tost GmbH Flugzeuggerätebau
München
Thalkirchner Str. 62
80337 München, Germany

2. Type / product name

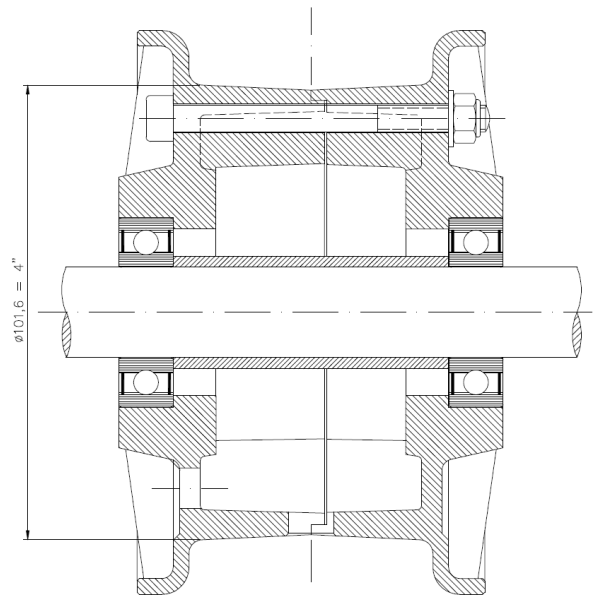
4" landing wheel

3. Part No.

034000 to 034700

4. Characteristics / Description

Split wheel hub from aluminium die-cast
Triple screwed
With maintenance-free ball bearings
For axle diameter 20 mm / 25 mm
With spacer, for axial tightening on the axle or axle stub shaft



Schematic drawing

5. Dimensions

Installation width from 60 mm to 100 mm
Bearing inner diameter 20 mm or 25 mm

6. Application

Main wheel, nose wheel, tail wheel, support wheel
For aircraft

7. Operating limits

Stat. load	dyn. load	max. load
9,0 kN	14,0 kN	22,0 kN

The maximum operating load of the wheel is defined by the load capability of the tire.

Tost GmbH Flugzeuggerätebau München

Thalkirchner Str. 62 ♦ 80337 München ♦ ☎ ++49-89-544 599-0 ♦ Fax ++49-89-544 599-70
EASA approved production organisation DE.21G.0065 ♦ www.tost.de ♦ info@tost.de

8. Approval

LBA-approved, approval through Luftfahrt-Bundesamt Braunschweig 28.12.99

9. Marking

Part-No., specification, manufacturer, serial number engraved in the wheel hub

10. Tires

Various tires are applicable, eg:

4.00-4 TOST AERO 8 pr, 260 x 85 TOST AERO 6 pr

5.00-4 Goodyear 6 pr

Tire pressure according to the instructions of the aircraft manufacturer, with regards to the deflection curves.

Tost GmbH Flugzeuggerätebau München

Thalkirchner Str. 62 ♦ 80337 München ♦ ☎ ++49-89-544 599-0 ♦ Fax ++49-89-544 599-70
EASA approved production organisation DE.21G.0065 ♦ www.tost.de ♦ info@tost.de