

1. Manufacturer

Tost GmbH Flugzeuggerätebau München
Thalkirchner Straße 62
80337 München • Deutschland

2. Type / Product

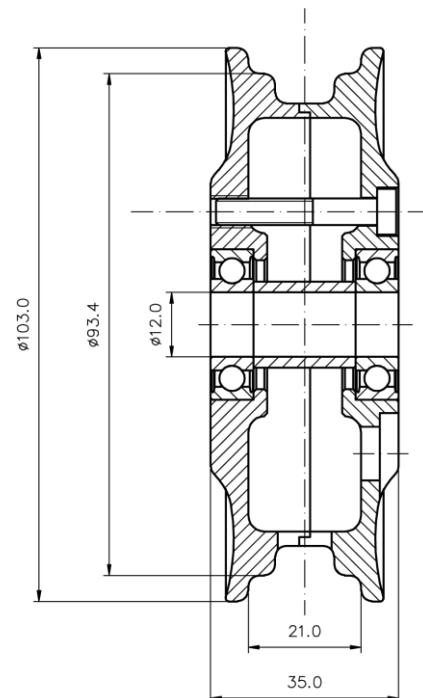
Landing wheel Mini 180

3. P/N

0 3 1 8 1 2 wheel hub
0 3 1 8 0 0 wheel hub fitted with tire and tube

4. Characteristics

Two-part wheel hub from aluminum
CNC-manufactured out of whole pieces
Threefold screwed
Maintenance free, sealed ball bearings
For axle diameter 12 mm
Spacer between bearings for axial bracing on axles or stub shafts
Surface anodized in blue (other colours on request)



5. Dimensions / Weight

installation width: 35 mm
bearing diameter: 12 mm
weight
w/o tire: 330 g / 0,73 lbs
with tire and tube: 600 g / 1,3 lbs

6. Application

Landing wheel for aircraft, tail wheel, support wheel; tube type

7. Operating Limits

Max. static load: 1,0 kN / 224 lbs
Max. limit load: 2,8 kN / 630 lbs
This loads are regarding the operating limits of the tire

8. Marking

P/N, manufacturer, S/N, wheel size and specification engraved in the wheel hub

Tost GmbH Flugzeuggerätebau Thalkirchner Straße 62 • 80337 München • ☎ +49 89-544 599-0 • Fax +49 89-544 599-70 EASA Production Organisation DE.21G.0065 • EASA Maintenance Organisation DE.145.0411 Design Organisation EASA.AP230 • www.tost.de • info@tost.de	Specification	Date:	Name:
	prepared:	04.09.2017	Ehrat
	checked:	05.09.2017	Maschkowitz

9. Tire

Tire 180 x 35 (7 x 1 3/4) 4 pr, P/N 062181

Tube 200x50 with angle valve 90°90°28G, P/N 063192

Only Tube Type tires approved

Load limits of the tire have to be regarded.

Filling pressure has to be applied in accordance with aircraft manufacturer manuals and the according deflection curve.

10. Tire installation

Unfold tube by inflating it slightly, place it in tire

Put wheel halve (valve hole side) on the tire/tube, stick valve through valve hole, screw on valve extension (with shortened thread P/N 069981) for temporary fixation

Place spacer in wheel halve (thread side) with centering axle (Ø 12 mm)

Place tire with up-pointing valve on wheel halve (thread side)

Match bolt holes with centering shaft (5 mm)

Tighten all three bolts with a calibrated torque wrench to the correct torque of 400 N/cm (3 ft-lbs)

Tost GmbH Flugzeuggerätekabau Thalkirchner Straße 62 • 80337 München • ☎ +49 89-544 599-0 • Fax +49 89-544 599-70 EASA Production Organisation DE.21G.0065 • EASA Maintenance Organisation DE.145.0411 Design Organisation EASA.AP230 • www.tost.de • info@tost.de	Specification	Date:	Name:
	prepared:	04.09.2017	Ehrt
	checked:	05.09.2017	Maschkowitz