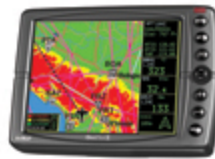


Compare to: > GeoPilot II PLUS

GeoPilot II



GeoPilot II PLUS



	GeoPilot II	GeoPilot II PLUS
Hardware		
Dimensions (inches)	140x100x35.4	140x100x35.4
Weight	390g	390g
Display	LCD TFT 5" (12,7 cm)	LCD TFT 5" (12,7 cm) with audio - video input
Display Colors	64 k	64 k
Display resolution	320x240 pixels	320x240 pixels
Automatic brightness control	✓	✓
GPS Receiver	Built-in Sirf Star III 20 channels	Built-in Sirf Star III 20 channels
Processor	Arm9 300Mhz	Arm9 300Mhz
RAM	32 MB	32 MB
Memory Support	Secure Digital (SD) 256 / 512 MB	Secure Digital (SD) 256 / 512 MB
Battery	✗	Built-in Li-Ion rechargeable battery
Power supply	Charger 10/35 V DC	Charger 10/35 V DC
Built-in Speaker	✓	✓
Audio Video Input	✗	✓
External GPS antenna serial Port	✓	✓
PC USB interface	✓	✓
Serial I/O port	4800 up to 9.600 bps	4800 up to 9.600 bps
Software		
Software Update	Free	Free
Land Elevation (color coded topographic map showing the altitude of the terrain)	✓	✓
Turn-by-turn vocal instructions	✓	✓
Full flight planning capability	Yes, up to 15 flight plans of up to 100 legs each	Yes, up to 15 flight plans of up to 100 legs each
Import and export flight plans, waypoints and routes from Navigator to PC	Yes, with third parties software	Yes, with dedicated software (Flitestar, Flightplanner, etc.)
Editable aircraft checklist	✓	✓
Trip computer	✓	✓
Full NavData Page	✓	✓
Full simulator functions	✓	✓
TAWS - Terrain Awareness and Warning System	✓	✓
Integration with other onboard navigation systems	✓	✓

Full or split HSI / RMI screen with data fields	✓	✓
Crossed Airspace predictor and advisor	Get a preview of the airspaces that you will cross along your flight, and real time warnings on airspaces being crossed.	Get a preview of the airspaces that you will cross along your flight, and real time warnings on airspaces being crossed.
Weather data	✗	Function available ONLY in North America, with the optional WxWorx receiver
Real Time Traffic	✗	When connected with the Zaon XRX
Exchange data with Google earth	Exchange Waypoints, FlightPlans and Tracks data between the navigator and Google Earth™	Exchange Waypoints, FlightPlans and Tracks data between the navigator and Google Earth™
Photo Database Creator	Load your pictures on the navigator and assign them to an airport	Load your pictures on the navigator and assign them to an airport
Maps		
Maps preloaded	One region (Americas / Europe + Africa / Asia + Australia) Jeppesen® database with Victor Airways, Marine objects, and private airports.	Aeronautical SD : One region (Americas / Europe + Africa / Asia + Australia) Jeppesen® database with Victor Airways, Marine objects, and private airports. Terrestrial SD : Includes the Tele Atlas Maps of Europe/North America to convert into a complete car navigator, TMC ready.
Low Airways	✓	✓
Private Airports (for USA)	✓	✓
Content of the box		
SD memory card	✓	✓
Car charger	✓	✓
Audio-video cable	✗	✓
Flexible holder with suction cup	✓	✓
Quick Start Guide	✓	✓